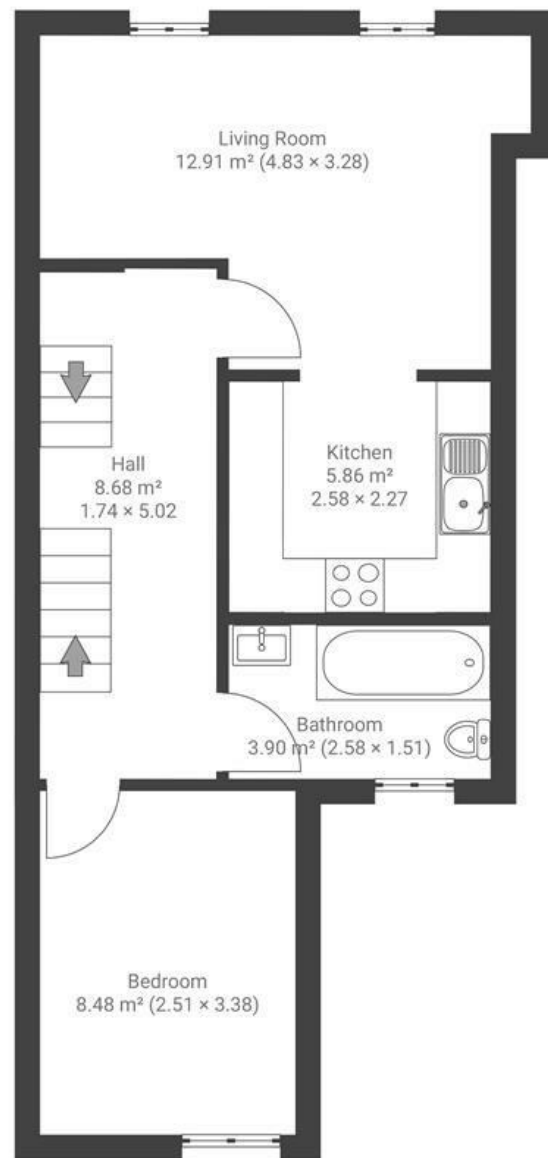


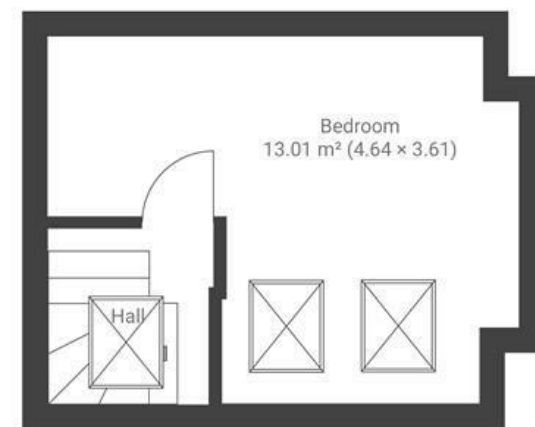
# Draycott Road

## ASHLEY DOWN

APPROXIMATE FLOOR AREA  
55.8 SQM / 600 SQFT



FIRST FLOOR



SECOND FLOOR

**Boardwalk**

# Draycott Road

ASHLEY DOWN, BRISTOL



£280,000



2 Bedrooms



BS7 9QY



1 Bathrooms

*"The new train station means commute to London possible, in close walking distance. The convenience, Lidl and Aldi across the road, the cycle path a few minutes away, Gloucester road a five minute walk, bus stop right outside, cul-de-sac parking with no permits, M32 a five minute drive. Also morning sun in the front of the house and evening sun in the back. Well insulated and solar panels means bills are super low."*

